

Pipped at the post!

Allison Homes was delighted that the 4-bedroom Folkingham type chalet bungalow at Nettleham Chase was shortlisted by First Time Buyer Magazine for its readers' awards in the Best Family Home category. Unfortunately, when the votes were announced in April at a glittering award ceremony in London, Allison Homes did not quite make it to the winners' podium.

Lynda Clark, editor of First Time Buyer Magazine, said: **"The First Time Buyer Reader's Awards are all about celebrating the important work that the industry is undertaking to support the next generation of homeowners. Competition at the awards was fierce this year, as the industry proves it is really going the extra mile to build fantastic new homes in sought-after locations and provide support for those who need it most."**



Saturdays are 'Souper' at one Rutland village church thanks to Larkfleet

The church of St Nicholas in the small Rutland village of Thistleton is enjoying a new lease of life as a pop-up café, partly thanks to a donation from the Larkfleet Homes Community Fund.

The former parish church is set to continue as the venue for a popular community café offering a range of hot and cold snacks with the help of a donation of £250 from the fund.

A group called the Friends of Thistleton Church (FOTC) was established to save the former parish church of St Nicholas from closure so that the building could be used for the benefit of the residents of Thistleton and the wider public.

FOTC treasurer Beverley Hancock said: "Last April we introduced a Saturday morning café serving hot and cold drinks and cakes.

"The café became increasingly successful as the summer progressed, regularly attracting 25 people or more during its two-hour opening time.

"We are extending the menu from

cakes to provide soup and snacks. This generous donation from the Larkfleet Community Fund has helped us to do this with the money being used to buy a counter-top cooker, soup maker and crockery."

The Saturday morning café has created an opportunity for local people to come together to help with the social and fundraising activities that are necessary to meet the costs of keeping the historic church open. The café has already reopened for the Spring and the weekend offerings have been dubbed 'Souper Saturdays'.

"There are no cafes in the neighbouring villages, so we also have visitors from the wider community dropping in. Additionally, Thistleton is situated on two popular walking routes, the Rutland Round and the Viking Way so the Saturday morning

café was also used by walkers last year and this is something that we hope to develop further if we can expand the menu from cakes to include healthier snacks."

Beverley added: "With an expanded menu including hot food we will be able to open for longer over the weekends and extend our service in the colder months as well as the spring and summer.

"FOTC will then be able to devote more time to developing further community activities for the benefit of local residents with a little less focus on fundraising.

We will also be able to use the additional catering equipment to provide a mid-week luncheon club."



Larkfleet helps boost local Citizens Advice charity running



Staff and volunteers at Citizens Advice Mid Lincolnshire have been displaying their logo in the streets of Boston to raise money for charity with help from a donation from the Larkfleet Homes Community Fund.

The fund donated £250 to pay for entries to the Boston Fun Run, Half Marathon and Marathon on behalf of Citizens Advice Mid Lincolnshire.

Staff and volunteers ran, jogged or walked to raise over £600 in sponsorship for Citizens Advice Mid Lincolnshire. The Larkfleet Community Fund donation was also used to purchase T-shirts with the Citizens Advice Mid Lincolnshire logo that staff and volunteers wore during the event.

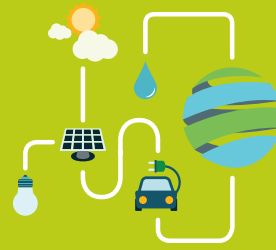
Sally Pygott, project development team leader at Citizens Advice Mid Lincolnshire, said: "All money raised by staff and volunteers who took part in the Boston Fun Run, Half Marathon and Marathon goes to Citizens Advice Mid Lincolnshire.

"We are a local charity that gives people the knowledge and confidence they need to find their way forward and we rely on the generosity of the local community and organisations like Larkfleet to continue that work."

"The four main issues we have dealt with over the past year have been benefits, debt, employment and housing. We offer free, confidential advice to everyone in Boston and North Kesteven."

Karl Hick, CEO of The Larkfleet Group of Companies, said: **"We were particularly pleased to support Mid-Lincolnshire Citizen's Advice in entering these events because I am a competitive runner myself, competing in international events."**

"Not only that; organisations like Citizens Advice have a positive impact on the local community. We have a strong community ethos at Larkfleet – our developments are carefully designed to provide a sense of place and provide real communities in which people want to live."



New website - Larkfleet.com

All the major companies within the Larkfleet Group of Companies now have a new home online. The individual websites of all the group's house-building businesses have been brought together at www.larkfleet.com.

The new arrangement makes it easier for house-buyers to find the home they are looking for as well as eliminating the duplication of information that used to occur when the group had several different websites.

Check out the new site and take a look at all our current housing developments at www.larkfleet.com.



NEW SALES OFFICE AT BOSTON GATE

The sales office at the Allison Homes development at Boston Gate opened on Saturday 6 April 2019 and to celebrate the company had a range of special offers.

Boston Gate is a development of traditionally-built two, three, four and five-bedroom homes located in the historic Lincolnshire town of Boston. There are 16 different styles of home to choose from, meeting the needs of homebuyers ranging from those setting foot on the property ladder for the first time through to those seeking a larger home for a growing family.

Historic Boston, from where the 'pilgrim fathers' set sail for the New World, offers a blend of urban and rural living unique to small towns. Boston is a popular place for families to live, offering good shopping and schools alongside a wide variety of activities, including museums, nature reserves, entertainment and sports right on the doorstep.

Sports facilities and clubs cover a range of activities for all the family including football, rugby, cricket, swimming, sailing and golf.

The A17 and A52 both link into Boston with access to surrounding towns, cities and coastal routes. Boston station offers rail services to Nottingham (via Sleaford), the seaside resort of Skegness and, via Grantham on the East Coast main line, to London, the north of England and Scotland.

